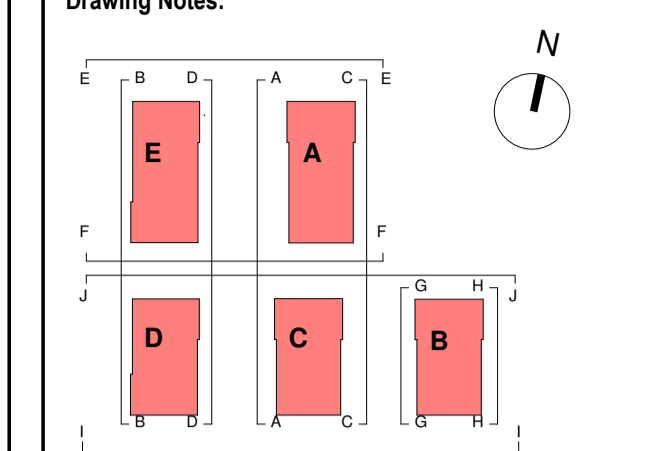
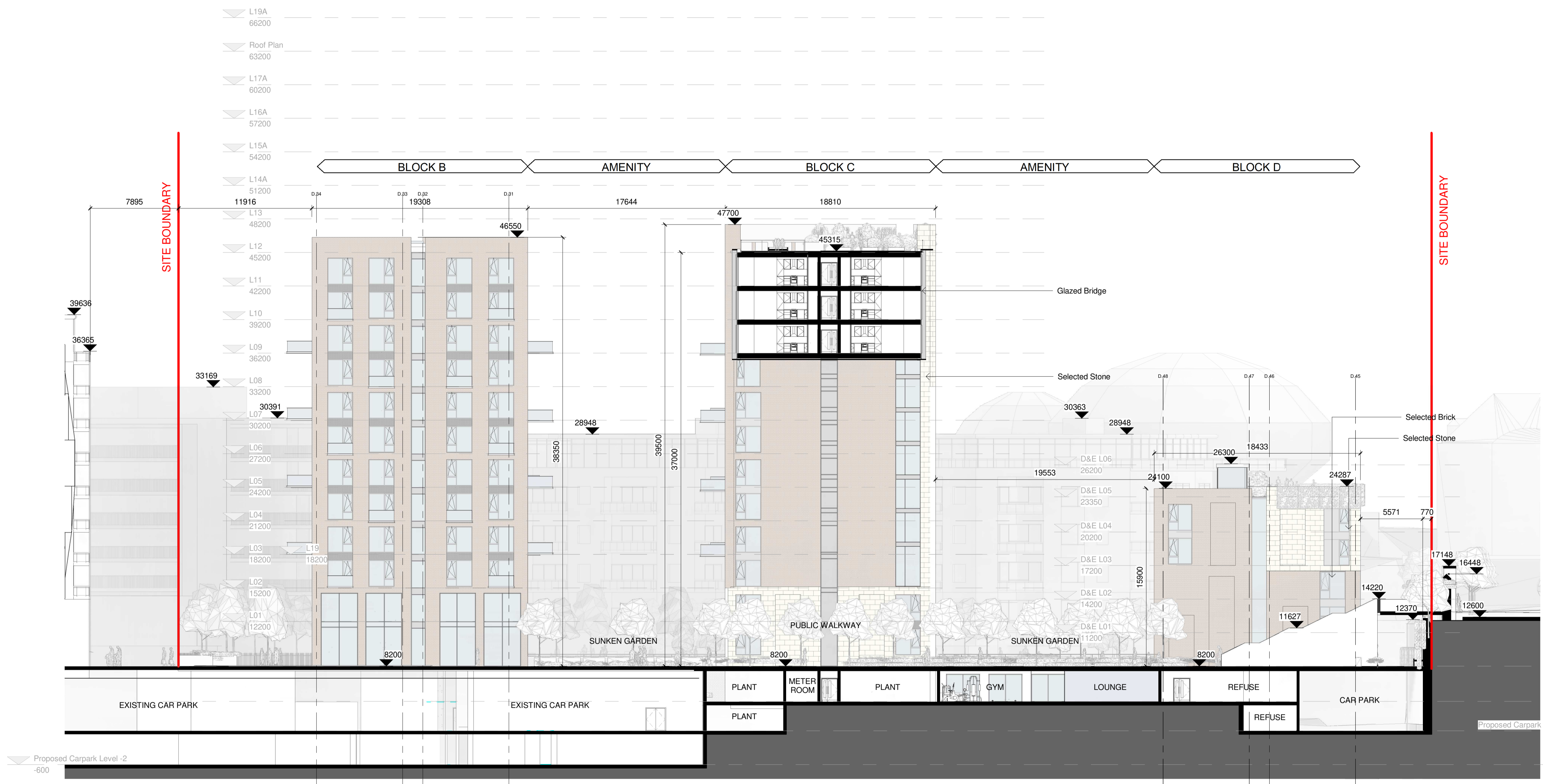


**Notes:**  
 - Do not scale from this drawing. Use figured dimensions in all cases.  
 - Verify dimensions on site and report any discrepancies to the Architect immediately.  
 - This drawing is to be read in conjunction with the Architect's Specification.  
 - © This drawing is copyright and may only be reproduced with the Architect's permission.



**KEY PLAN**



**Proposed Elevation JJ**  
1 : 200

Rev.	Date	Drawn	Details of Issue / Revision
P01	02/07/21	EOB	Issued for Planning

Issues & Revisions

W: www.reddyarchitecture.com  
E: info@reddyarchitecture.com

**Client Details:**  
 HPREF HSQ Investments Limited

**Project Details:**  
 HSQ Feasibility  
 Heuston South Quarter, St John's Rd W,  
 Kilmainham, Dublin 8

**Drawing Title:**  
 Proposed Elevations 06

Job No. <b>P19-213D</b>	Sheet Size <b>A1</b>	Scale @A1: <b>1:200</b>
Issue Date: <b>17/09/21</b>	Drawn By: <b>IOB</b>	Reviewed By: <b>EOB</b>

Status	Purpose of Issue
	<b>Planning Permission</b>
Project-Originator-Zone-Level-Type-Role-Classification-Number	Revision
<b>RAU-ZZ-ZZ-DR-A-ELE-06206</b>	<b>P 01</b>